

Christmas Stitched

MINI CHARM GIFT BAGS

Makes (2) gift bags

each 10" wide x 12" tall x 4" deep (*not including handles*)

KITS available from
ShabbyFabrics.com
while supplies last

REQUIRED MATERIALS

- ½ Christmas Stitched panel for **bag front**
- ½ yard red gingham for **sides, bottom, and handles**
- (2) mini charm packs for **patchwork**
OR an assortment of (60) 2½" x 2½" squares
- 30" x WOF white holly for **lining**
- 2⅞ yards interfacing

PLEASE NOTE

All seams are ¼" unless otherwise noted

WOF = Width of Fabric

CUT FABRICS

From **interfacing**, cut:

- (2) 14" x 20" rectangles for **red gingham**
- (2) 12" x 14" rectangles for **panel fabric**
- (2) 11" x 13" rectangles for **patchwork**

From **panel fabric**, *fussy cut*:

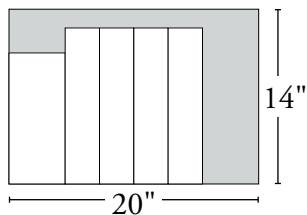
- (2) 14" tall x 12" wide rectangles
Fuse *each* with interfacing, then *trim to*
(2) 12½" tall x 10½" wide for **bag fronts**

From **red gingham**, cut:

- (2) 2" x WOF for **handles**
- (2) 14" x 20" rectangles

Fuse *each* with interfacing, then from *each* cut:

- (1) 4½" x 10½" rectangle for **bag bottom**
- (4) 2¾" x 12½" rectangles for **side panels**



From (2) **mini charm packs**, select:

- (60) 2½" x 2½" squares for **patchwork**

From **white holly**, cut fabric in half at the fold, to yield

- (2) 30" x 21" rectangles for **lining**



Follow along with the FREE tutorial
**HOW TO MAKE A
MINI CHARM GIFT BAG**
featured on our YouTube channel:



YouTube.com/ShabbyFabrics

"From our home to yours"

*Try the cookie recipes on this project's
FREE DOWNLOAD page!*

HANDLES

Fold (1) **handle** strip in half lengthwise, wrong sides together, and press to establish crease.



Fold both raw edges to meet at the center.



Then fold and press again to form a ½" wide strip.

Topstitch ⅛" down both sides.



From this, cut (2) strips 20½" long.

Repeat to make a total of (4) handles.

PATCHWORK

Select (30) $2\frac{1}{2}$ " \times $2\frac{1}{2}$ " squares and arrange them as desired in (6) rows of (5) squares each.

Sew together in rows. Refer to arrows (*right*) to press rows in alternating directions. Sew rows together. Press seams open. Patchwork unit should measure $10\frac{1}{2}$ " \times $12\frac{1}{2}$ ".

Fuse patchwork with (1) 11" \times 13" interfacing rectangle.

Trim interfacing to be even with the patchwork rectangle.

Repeat to make a total of (2) fused patchwork units.



Patchwork unit - Make (2)

ASSEMBLE OUTER BAG

Refer to Bag Assembly diagram (*below*).

Sew (1) **bag bottom** to the bottom of (1) **bag front** and (1) patchwork unit. Press seams toward bag bottom.

Sew **side panel** rectangles to the sides of bag front and the sides of patchwork unit. Press seams toward side panels.

Place (2) handles, one at the center of each end, aligning raw edges, with about 5" spacing. Pin or clip, and baste in place with an $\frac{1}{8}$ " seam. Pin handles to outer bag to keep them from interfering with the assembly process.

Repeat to make a total of (2) outer bags.

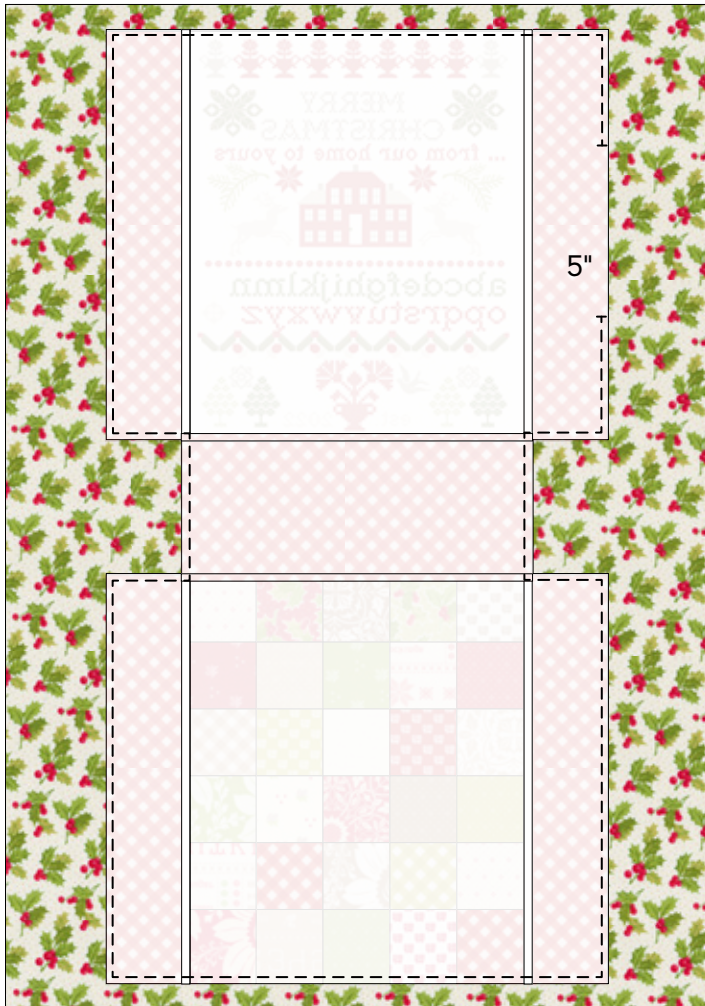


Bag Assembly



FINISH BAG

Refer to Lining diagram (*below*) to place outer bag on **lining** fabric, right sides together. *The lining is intentionally larger than the bag and will extend beyond every side.* Pin well. Sew a ¼" seam around entire perimeter of outer bag, leaving a 5" opening on one side panel for turning.



Lining

Trim lining to be even with outer bag. Carefully clip corners.

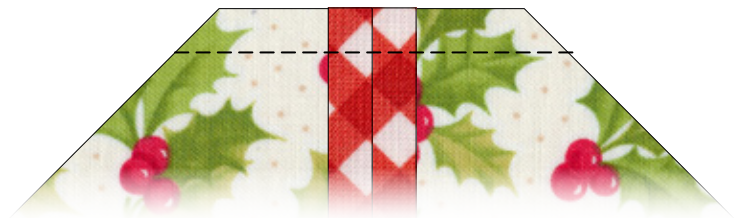
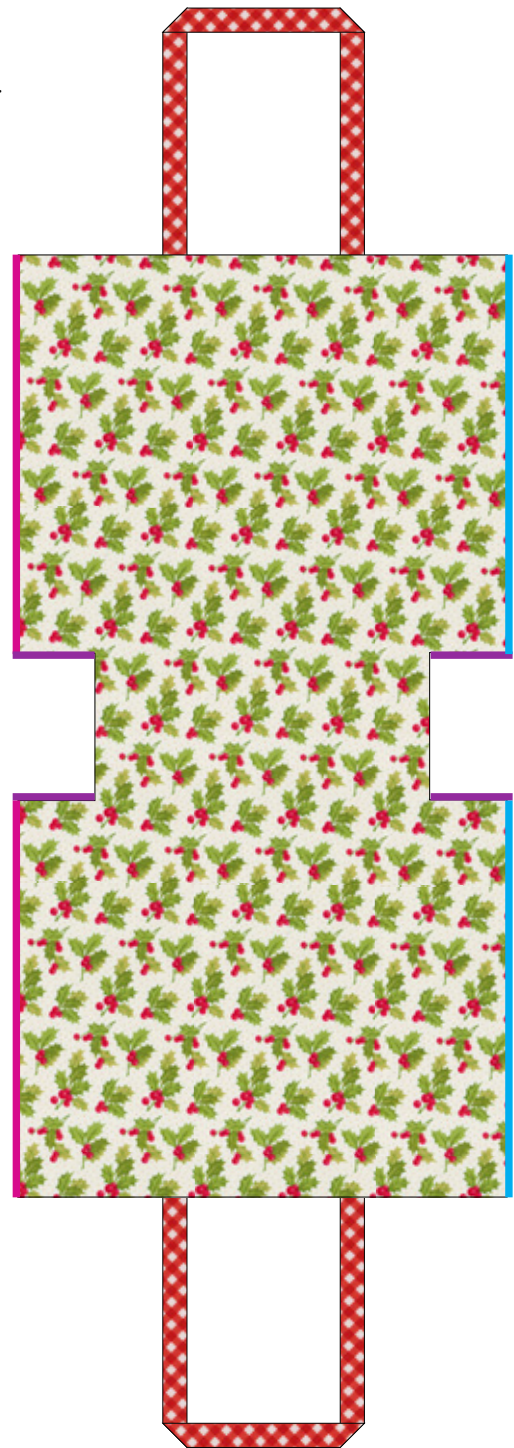
Turn right side out. Use a point turner to push out corners.

Press. Topstitch the opening closed with an ⅛" seam.

Fold bag in half with lining facing out. Refer to diagram (*upper right*) to sew down each side: sew **magenta** sides together, then sew **cyan** sides together. Box the corners on each side by aligning the bottom of the side panels (**purple**) with the bag bottom. Sew with a ¼" seam allowance (*see detail at right*).

Turn bag right side out and press. If desired, topstitch around top of bag to further secure the handles and lining.

Repeat to make a total of (2) gift bags.



Try the cookie recipes on this project's **FREE DOWNLOAD** *page!*