



EASY PIECED

TABLE RUNNER SERIES

June

Finishes to 12½" × 51½"



REQUIRED MATERIALS

- ⅓ yard white dot
- ⅓ yard turquoise ombre
- 5" × 14" green
- 7" × WOF aqua
- 15" × WOF pink stripe
- various colorful fabrics for appliqué
- 55" × 21" for backing

CUT FABRICS

From **white dot**, cut:

- (3) 11" × 11" squares for **piecing**

From **turquoise ombre**, cut:

- (3) 11" × 11" squares for **piecing**
Fussy cut two squares from near the selvages, and one square from the center.

From **green**, cut:

- (2) 1½" × 12½" strips for **outer sashing**

From **aqua**, cut:

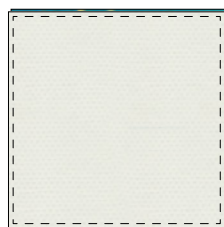
- (2) 6" × 12½" rectangles for **appliqué background**

From **pink stripe**, cut:

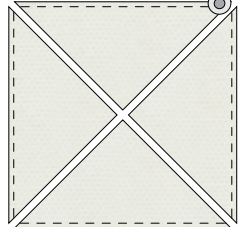
- (4) 2½" × WOF strips for **binding**
- (2) 1½" × 12½" strips for **inner sashing**

DISAPPEARING PINWHEELS

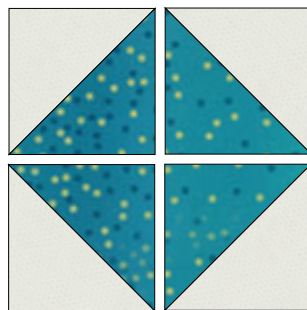
STEP 1: Place (1) white 11" × 11" square on top of (1) 11" × 11" turquoise square, right sides together, and press. Sew around entire square with a ¼" seam allowance. **STEP 2:** Cut in half, twice, diagonally. **STEP 3:** Press open. You will now have (4) Half Square Triangles.



Step 1



Step 2



Step 3

RECOMMENDED PRODUCTS

- Wafer 1 Lightbox
- Appliqué Pressing Sheet
- Olfa Spinning Rotary Mat 17" × 17"
- Creative Grids 2½" × 24½" Ruler
- Patchwork Pins
- Magnetic Pin Caddy
- Rotary Cutter

All available at ShabbyFabrics.com

As seen on our
**EASY PIECED TABLE
RUNNER SERIES - JUNE**
video featured on our YouTube channel:

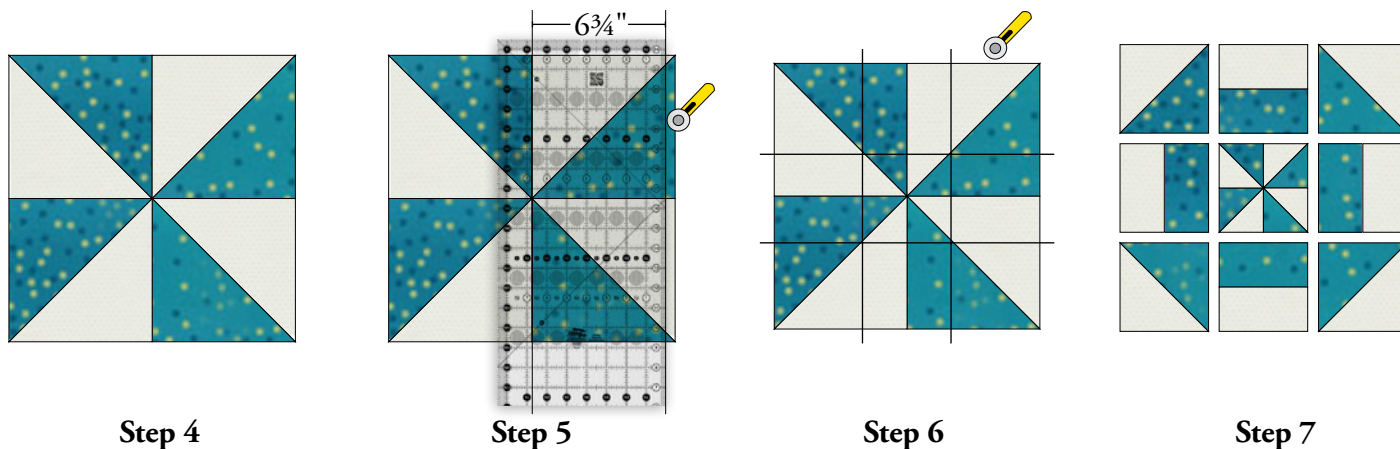


[YouTube.com/Shabby Fabrics](https://www.youtube.com/ShabbyFabrics)

STEP 4: Rotate Half Square Triangles as shown. Sew together to create a Pinwheel Block, pressing seams toward dark fabric.

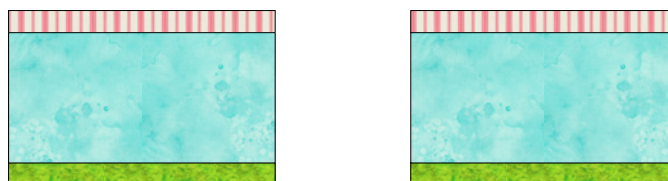
STEP 5: Trim block to $13\frac{1}{2}" \times 13\frac{1}{2}"$, measuring $6\frac{3}{4}"$ from the center seam *on all four sides*. **STEP 6:** Cut Pinwheel Block into (9) $4\frac{1}{2}" \times 4\frac{1}{2}"$ squares. **STEP 7:** Rotate blocks as shown. Sew squares back together, pressing seams as desired. Block will now measure $12\frac{1}{2}" \times 12\frac{1}{2}"$.

Repeat to make a total of (3) Disappearing Pinwheel Blocks. Set blocks aside for assembly at a later step.



APPLIQUÉ

Sew (1) pink stripe **inner sashing** strip to an aqua **background**; press toward inner sashing. Sew (1) green **outer sashing** strip to the other side; press toward outer sashing. Repeat with second background.

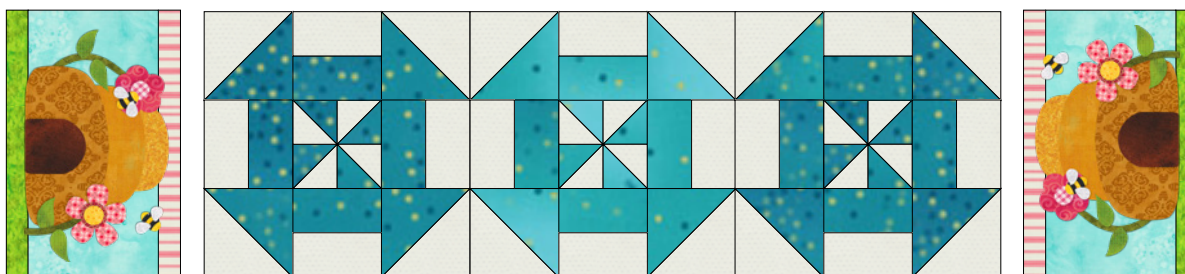


Your diagram has two pages, a **Reverse Diagram** and an **Assembly Diagram**. When tracing shapes for fusible appliqué, use the Reverse Diagram.

Gently peel fusible paper from the back of each shape. Refer to **Assembly Diagram** to arrange shapes on background fabric. Appliqué in place using the method and stitch of your choice.

ASSEMBLE TABLE RUNNER

Sew blocks together in a row, pressing seams open. Sew one appliqué unit to each side as shown.



FINISH TABLE RUNNER

Layer top, batting, and backing. Quilt as desired.

Piece binding into one long strip. (We used a straight seam so we could match up the stripes.) Fold in half lengthwise, wrong sides together, and press. Line up raw edges of the binding with the raw edge of the table runner. Sew binding to the front side of the table runner, starting at any side. Turn the binding over and hand stitch to the back of the table runner.



EASY PIECED

TABLE RUNNER SERIES

June

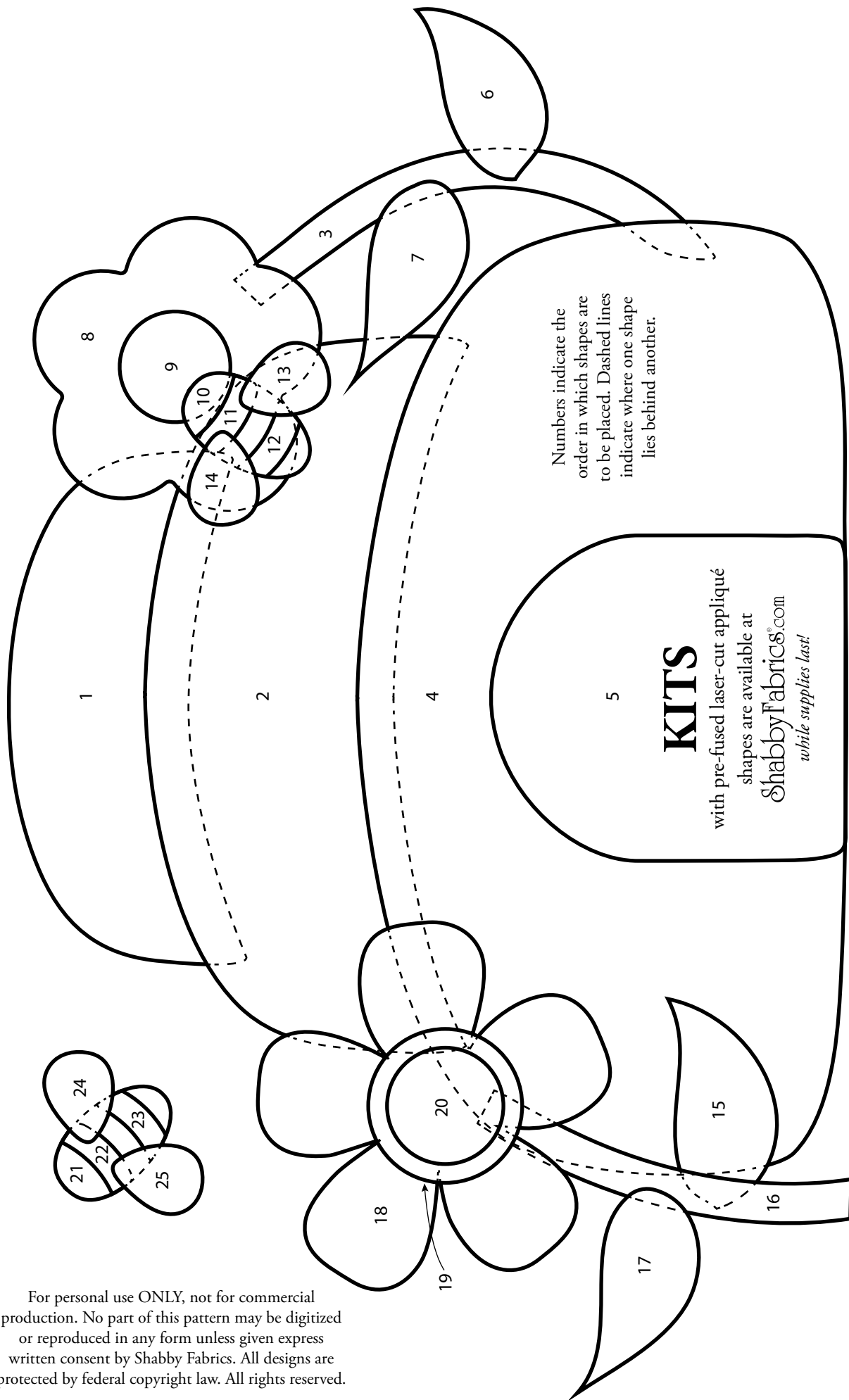
ShabbyFabrics.com

© 2019 Shabby Fabrics

Reverse Diagram

Use this diagram for
fusible appliqué

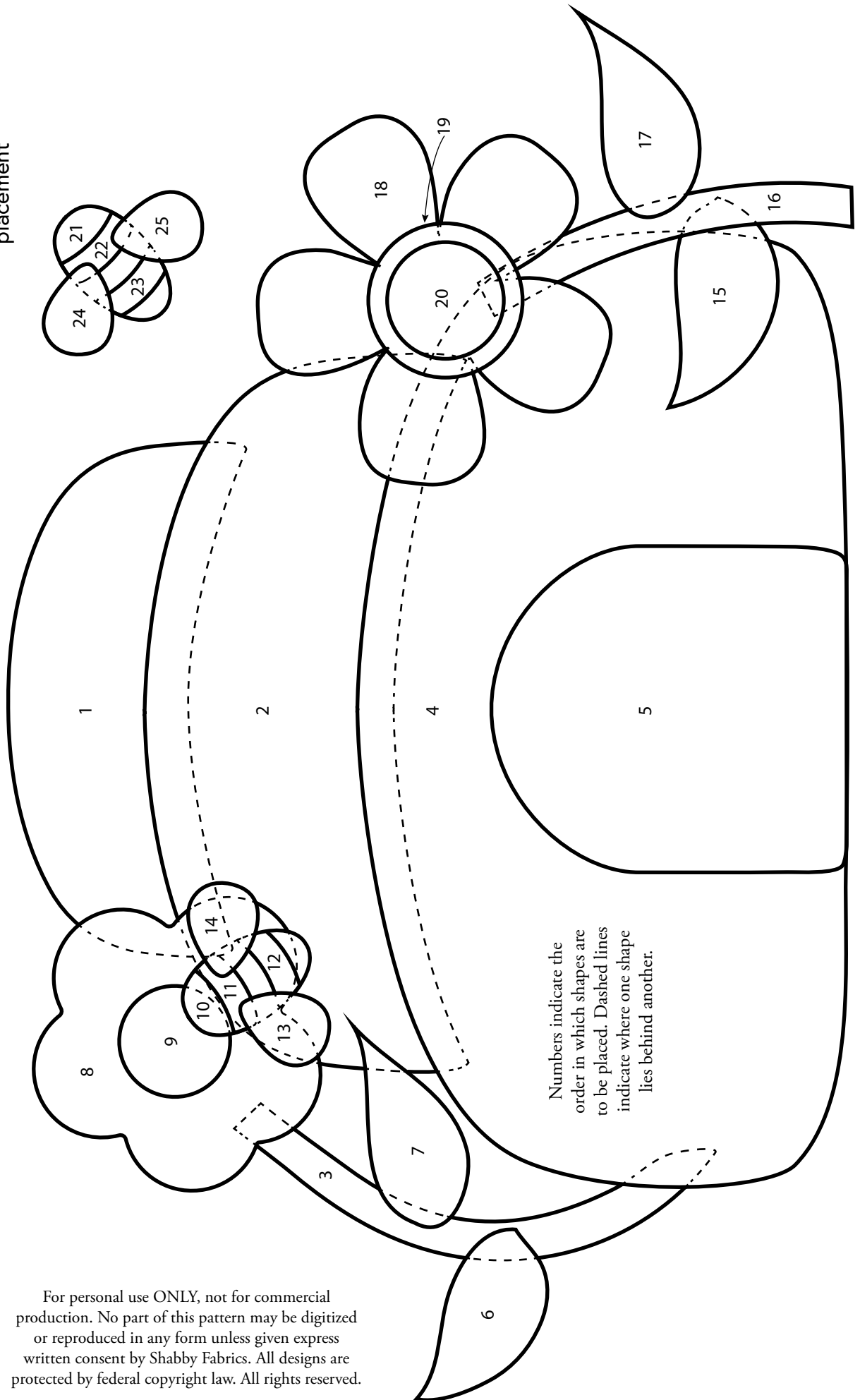
For personal use ONLY, not for commercial
production. No part of this pattern may be digitized
or reproduced in any form unless given express
written consent by Shabby Fabrics. All designs are
protected by federal copyright law. All rights reserved.





Assembly Diagram

Use this diagram for
placement



Numbers indicate the
order in which shapes are
to be placed. Dashed lines
indicate where one shape
lies behind another.

For personal use ONLY, not for commercial
production. No part of this pattern may be digitized
or reproduced in any form unless given express
written consent by Shabby Fabrics. All designs are
protected by federal copyright law. All rights reserved.